



Sea Level Rise in Sausalito

Wednesday, January 21, 2021, 6:30pm via Zoom

Hosted by:

**The Sausalito Woman's
Club**

What is Sea Level Rise?

Sea Level Rise (SLR) is an increase in the level of the world's oceans due to the effects of global warming. The oceans then absorb the majority of the heat, thus making water warmer. As water becomes warmer, it expands, resulting in ocean levels rising worldwide. Couple this with warmer air carries more moisture, then rain and stormwater run off all expel into the oceans and bays.

Event Chair: Kristina Feller, Chair of the Sausalito Planning Commission and Partner at Domani Guild LLC.

Kristina is a member of the 2019 Jinks Class. She has been part of Sausalito since 2014 when she bought her home. Kristina was working and living overseas in the Middle East and Southeast Asia for over 12 years before she moved back home to Sausalito in 2018.

Kristina's background is in engineering, business and finance. Her experience spans the globe in both mature and emerging markets in renewable energy, real estate development, capital infrastructure, and advanced technologies.

She is a founding partner in Domani Guild, a venture capital firm that invests in patentable digital technologies in water, agriculture and power. She is the Chair of the Sausalito Planning Commission and member of the General Plan Working Group. She has been a very vocal and strong advocate to elevate the Sea Level Rise conversation within our community to prepare for management and planning of the inevitable further impact to Sausalito. Sausalito now includes Sea Level Rise in its public policy, as evidenced by the General Plan Update document.

Meet The Panelists

We have convened a group of panelists that each have varying backgrounds and areas of expertise with unique perspectives and ideas about the reality of Sea Level Rise, the impacts on Sausalito and the larger Bay Area, what our local and state governments are doing about this and how we can all be a part of the solutions moving forward.

These panelists will outline:

- How Much Is the Bay Rising? *Over 3'0" expected in the next 10 years, and the rate is accelerating.*
- How Does This Affect Me or Impact Me? *Think about 101 North being closed much more often to permanently. We are poised to lose the largest tax base for Sausalito as businesses in the Marinship close.*
- Why Should I care About SLR? *The bottom line is economics. Even if your home is not near the waters edge, SLR will impact access to Sausalito, deliveries, tourism, businesses and escape routes identified for natural disasters*
- What Can I Do To Help My Community? *Be vocal and support your city and county governments plan ahead. Raise awareness in your community and stay informed.*



Chris Choo, principal watershed planner for Marin County Department of Public Works

cchoo@marincounty.org

Chris Choo, principal watershed planner for Marin County Department of Public Works supports Marin communities with sea level rise, flood protection, and watershed restoration. She manages BayWAVE, the sea level rise planning and adaptation program for the bay shoreline in Marin. She was involved in launching the www.MarinWatersheds.org and www.MarinSLR.org websites, identifies project and funding options to reduce flooding and increase habitat, works with frontline communities of color, and supports regional planning for water resources through the North Bay Watershed Association and Bay Adapt. Chris works with communities, local and regional government on sea level rise adaptation and resilience.



Janelle Kellman, Vice Mayor The City of Sausalito

jkellman@sausalito.gov

Vice-Mayor **Janelle Kellman** was elected to her first four-year term on the Sausalito City Council in November 2020. Janelle served as a member of the Sausalito [Planning Commission](#) for ten years, first from 2002-2008, serving as the Chair in her final term, and then again from 2016-2020, again serving as the Chair in her last term. During her tenure as a planning commissioner, Janelle served as a member of the [General Plan Advisory Committee](#) from 2017-2020, and as a member of the [General Plan Working Group](#) from 2019-2020.

Janelle is an attorney and an entrepreneur. She began her career in private practice as a land use and environmental attorney in San Francisco before joining EPA Region IX to work on water quality and species issues. She also spent six years in-house as the lead environmental permitting attorney for large renewable energy projects. Janelle has served on the Board of Directors for Baykeeper, a water quality non-profit, and as an inaugural board member at the Ecotech Institute, a tech-based college focused on coursework in renewable energy. Active in her community, Janelle has also spearheaded community efforts to develop a floating microgrid and engage stakeholders in developing approaches to address sea level rise

As an entrepreneur, Janelle launched her own ecommerce platform, and consults with startups across verticals in the ideation and early growth stage. She is also a founding member of the Marinship Emergency Medical Manufacturing Group which fabricated and shipped over 13,000 plastic face shields nationwide in response to the COVID-19 pandemic.

Janelle is an avid athlete. She played two Division I sports in college, has started and led three separate women's cycling programs in the Bay Area, and is currently training for her 11th ultramarathon.



Rebecca Schwartz Lesberg, President and Founder of Coastal Policy Solutions

rebecca@coastalpolicysolutions.com

For nearly ten years, Rebecca led on the ground conservation, restoration, and policy work with the Audubon Society, first as the Director of Conservation at San Diego Audubon and more recently as the San Francisco Bay Program Director for Audubon California. Prior to this, Rebecca served as Adjunct Faculty at the University of San Diego and was a Field Biologist for AMEC Foster Wheeler, an environmental consulting firm. With this varied background, Rebecca focuses on the intersection of science, policy, restoration, and community engagement to protect California's coastal environments from the impacts of human activity, including climate change. Since 2010, Rebecca has helped raise over \$2 million in grant funds to support conservation efforts across the state.

Rebecca is involved in several Bay Area conservation groups, including serving on the Citizen Advisory Committee of the San Francisco Bay Restoration Authority and the San Francisco Bay Joint Venture, where she serves as the Vice Chair of the Management Board and the Chair of the Government Affairs Committee. She holds a Bachelors of Science in Ecology from UC San Diego and conducted graduate work at the University of San Diego studying the historical ecology of sportfishing in San Diego Bay. Rebecca has been published in the [San Diego Union Tribune](#) and featured in the [Los Angeles Times](#), and was awarded a 2014 President's Volunteer Service Award from President Barack Obama



Peter Teague, Founder and Principal of PT Philanthropic

peter@ptphilanthropic.com

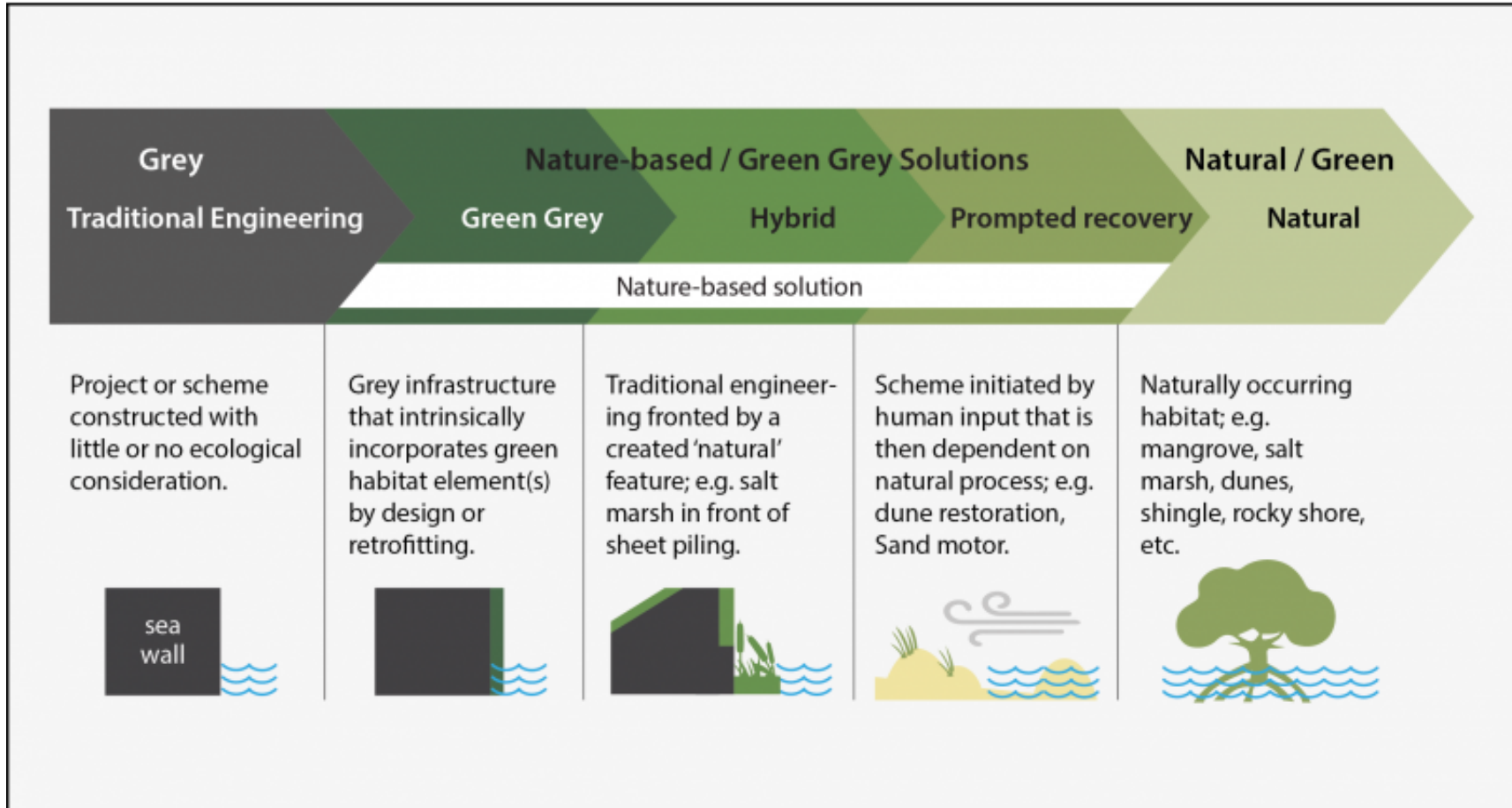
Peter Teague is founder and principal of PT Philanthropic which provides strategic advice to foundations, individual donors, and non-profit organizations. He has served as a senior strategist and director for national grant-making foundations in New York and San Francisco, senior policy advisor in the U.S. House and Senate, attorney, Peace Corps Volunteer and Executive Director of a think tank and a community foundation. Peter serves as advisor to the William & Flora Hewlett Foundation, the Bernard and Anne Spitzer Charitable Trust, and the San Francisco Estuary Institute. For the Omidyar Network Peter has examined the rise of authoritarianism and threats to our democracy.

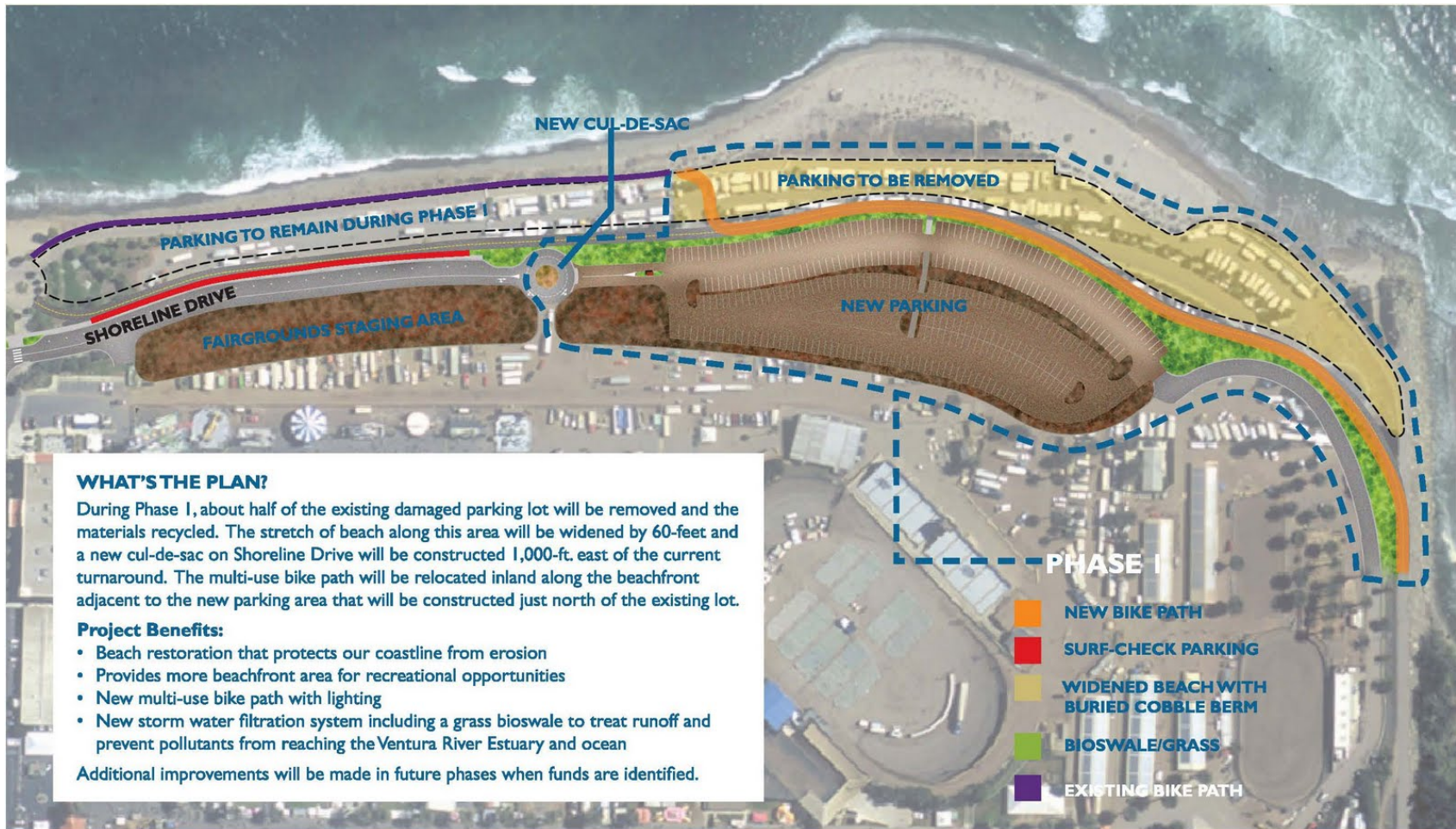
At the Nathan Cummings Foundation, Peter directed ground-breaking grant making programs emphasizing the importance of developing new ways of seeing human and environmental challenges.

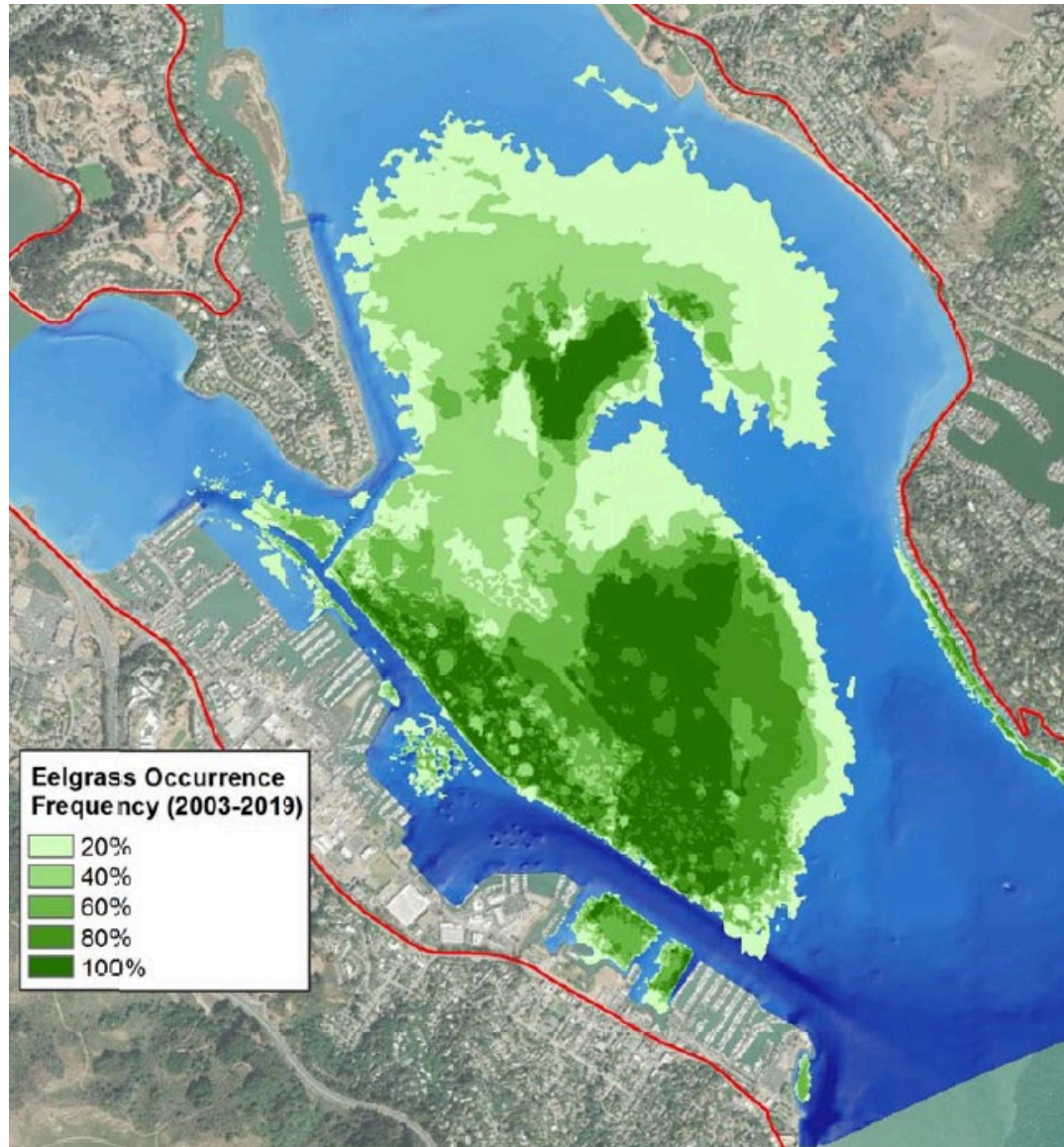
Slides Prepared and Used by Panelists

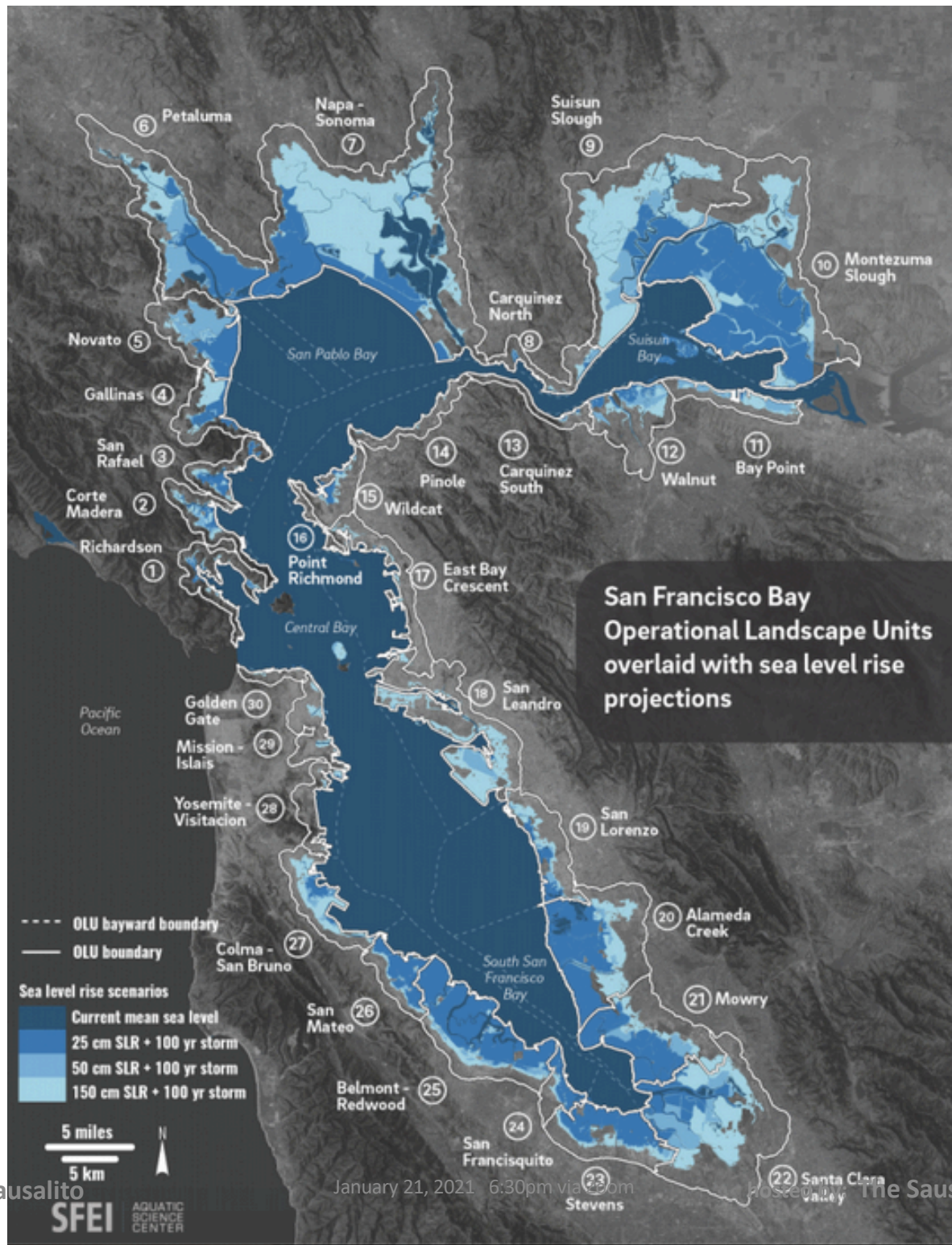
The following slides were shared with the audience and the panelists would like to make this available to you.

Coastal Policy Solutions









Sea Level Rise in Sausalito

January 21, 2021 6:30pm via Zoom

hosted by The Sausalito Woman's Club

List of Additional Resources

www.MarinWatersheds.org

www.MarinSLR.org

<https://www.marincounty.org/main/marin-sea-level-rise/baywave>

<http://ft.floatinghomes.org/tracking-sea-level-january-results-and-next-steps/>

<https://www.sfei.org/adaptationatlas>

<https://cortemaderaadapts.org/>

<https://www.cityofsanrafael.org/adaptation/>

<https://www.sfgate.com/bayarea/article/Sea-level-rise-map-San-Francisco-Bay-Area-14913722.php>

<https://www.sfweekly.com/news/sea-level-rise-a-major-threat-to-san-francisco/>

<https://www.mercurynews.com/2019/05/02/san-francisco-bay-new-plan-to-combat-sea-level-rise/>

Full Recording of the Live Zoom Event Available:

<https://www.youtube.com/watch?v=aoMrLYJOdA4>

Next Steps and Actions

1. **Sausalito-specific modeling.** Update the existing models to also reflect subsidence, liquefaction, and King Tides.
2. **Infrastructure studies.** Coordinate with the county and other stakeholders to commission an Engineering Analysis to examine the infrastructure costs and scenarios across Sausalito.
3. **Nature-based adaptations for Sausalito.** Examine opportunities for nature-based adaptations uniquely well-suited to Sausalito.
4. **Partnerships and leadership.** Find ways to partner with the County and Regional thought partners to advance local solutions in a global dialogue.